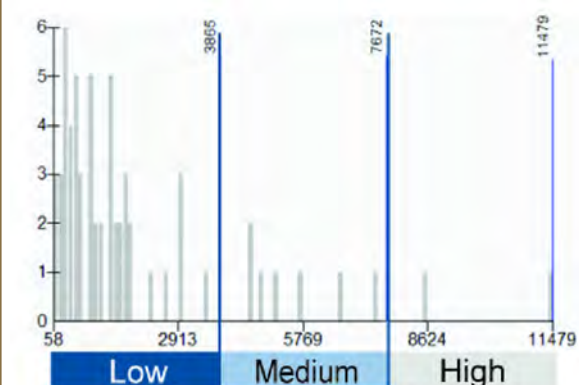


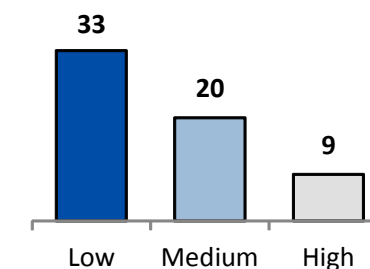
This map shows the average number of jobs per tract in 2010 for the Metropolitan Planning Organization are census tracts. The two largest employment areas are Downtown Eugene with over 11,000 jobs and West Eugene, with over 8,500 jobs.

Jobs on this map are for covered employment, which are jobs that have unemployment insurance reported, and does not include self-employed.

For this map, the data was classified based on defined breaks in the data. A histogram is included to show how the data is distributed in the three categories.



The chart below shows the number of tracts in the Metropolitan Planning Organization Area that have low, medium, and high numbers of jobs.



Map date: 9/16/13 Map data: Oregon Employment Department, 2010 QCEW data set, with augmentations by LCOG.
 Caution: This map is based on imprecise source data, subject to change, and for general reference only. The work that provided the basis for this map was supported by funding under an award with the U.S. Department of Housing and Urban Development. The substance and findings of the work are dedicated to the public. The author and publisher are solely responsible for the accuracy of the statements and interpretations contained in this publication. Such interpretations do not necessarily reflect the views of the Government.

- Census 2010 Tracts
- Metropolitan Planning Organization Area boundary
- Urban Growth Boundaries

- Average Number of Jobs per Tract**
- 58 - 1,159
 - 1,160 - 3,579
 - 3,580 - 11,479